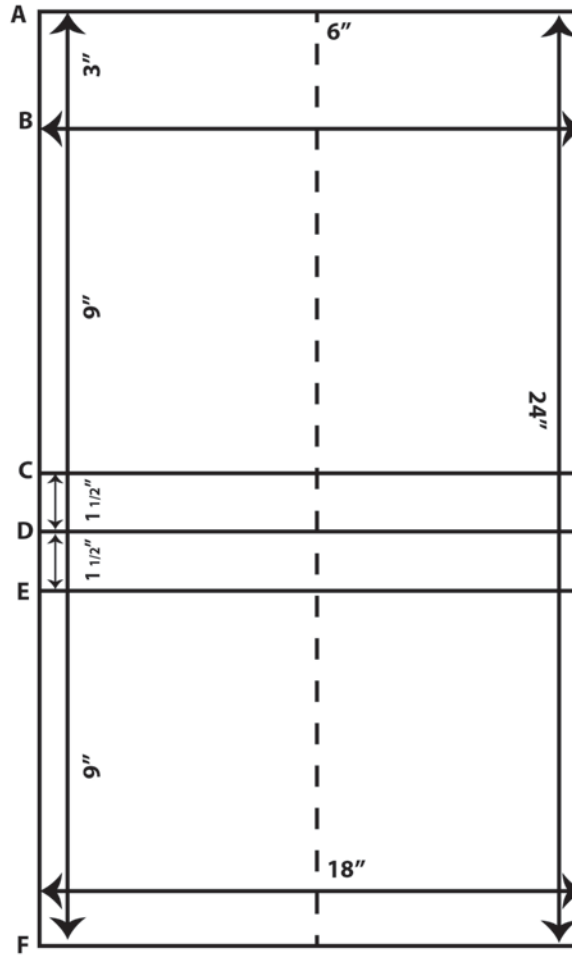


ENVELOPE FOR ANCESTRAL LINEAGE

On a sheet of rice paper measuring 18" x 24", draw with light pencil marks the following lines (except dotted line G in center):



1. Fold the sheet away from you at line D;
2. Unfold the sheet again
3. Pick up fold D and fold it first to line C and then to line E, producing a kind of “tent” or “mountain”;
4. Place your folded lineage over the center line G, between B and C;
5. Fold left edge A-F toward G, center of sheet, allowing $\frac{1}{4}$ " between fold and lineage;
6. Fold right edge A-F toward G, center of sheet, allowing $\frac{1}{4}$ " between fold and lineage;
7. Fold lower edge F to line B;
8. Fold corners of paper A-B on both sides at 45° angle to create a closing tab;
9. Fold tab at line B and tuck tab into lower part of envelope

To see a video of the above, click on: <http://bit.ly/rakusu31>

*** Please submit the Ancestors Lineage Chart separate from its Envelope with your name on the Chart and the Envelope in a ziplock bag with your name inscribed on the bag as well.**